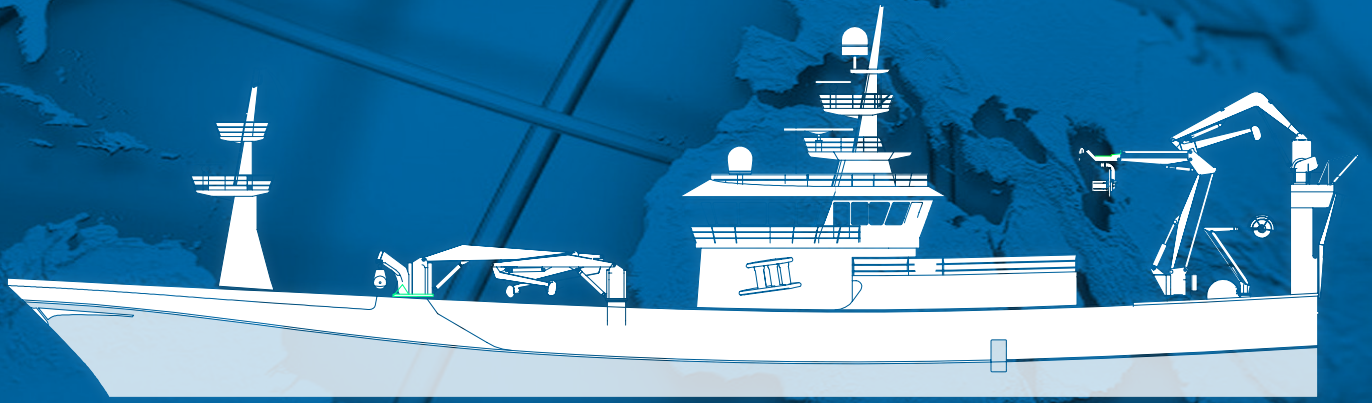


# Floating Barge Crane

1620.FBC.7008 Information Sheet

**iskar**  
Mühendislik Ltd.



*Your Partner from Turkey*

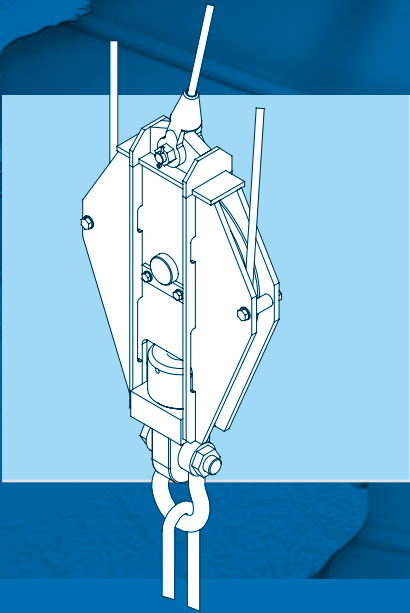


## Deck Equipment for Challenging Conditions

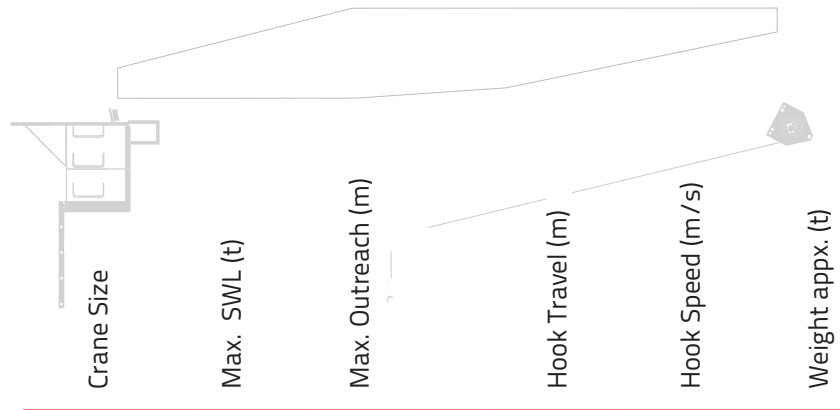
Highly skilled technical  
designers, engineers and  
suppliers are our guarantee  
of first class quality.

As a manufacturer of material handling systems, ISKAR Ltd. and its core team, has been designing and supplying marine equipments since 1989. Our marine division is focused on tailor made cranes and standard products for hose handling, cargo, service and fishing boat cranes.

The perfect coordinated team of ISKAR is capable of developing and delivering very competitive projects around world. Main areas cover pond docks, fishing boats, tug boats, cargo and tanker vessels, harbour terminal equipment, shipyard material handling systems and deck cranes. Illustrated in the following pages, you will find a wide selection of ISKAR productions. Standardized design allows us to deliver reliable systems in very optimized schedule with competitive prices. We are always read to solve our customers requirements on marine material handling systems.



ISKAR is capable of delivering stiff boom, lattice boom and knuckle jib slewing cranes, which guarantee trouble free operation in hostile marine environment.

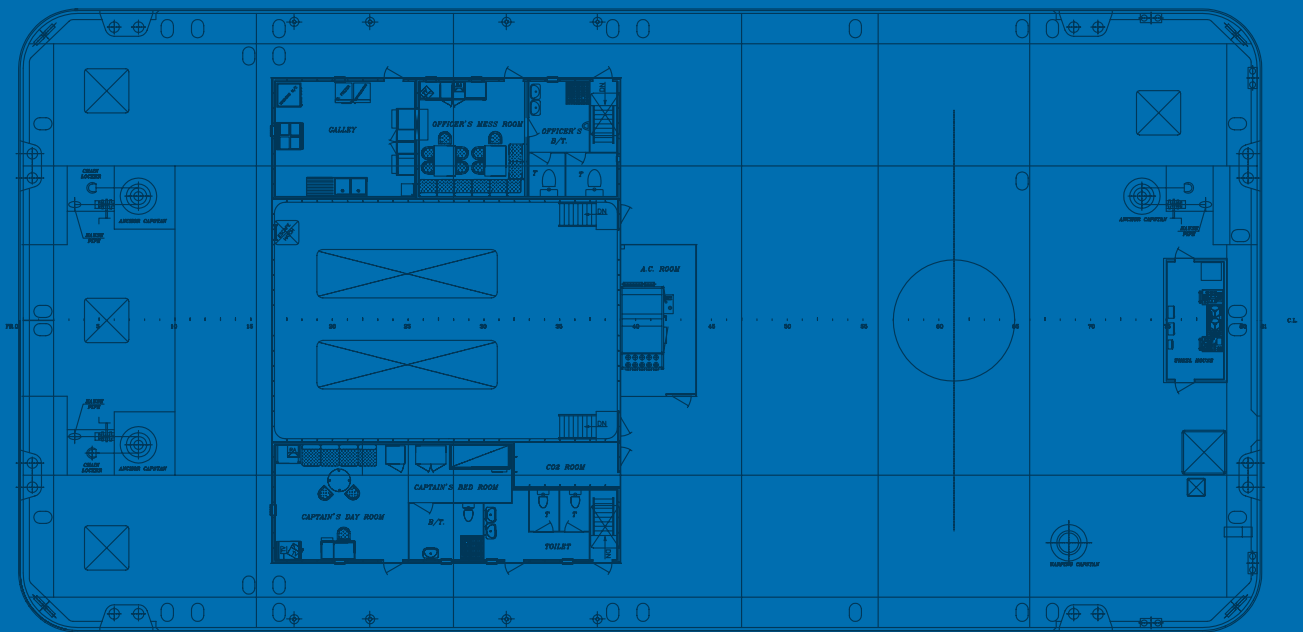


The type and details of a crane depends on customers' requirements and can be satisfied with wide range of options provided by ISKAR

#### OPTIONAL FEATURES

- Constant tensioning system
- MOPS (manual overload protection system)
- AOPS (Automatic overload protection system)
- Radio or Cabin operation
- Diesel driven power pack
- LEBUS grooved winch drum
- Operation in low temperature.
- Stainless steel fittings.
- PLC safety system.

Crane Size	Max. SWL (t)	Max. Outreach (m)	Hook Travel (m)	Hook Speed (m/s)	Weight appx. (t)
F25	2	10	35	40	4,5
	2,15	8	30	20	4,3
F40	1,5	18	30	40	7
	3	15	70	45	6,5
F70	3,5	10	30	50	5
	5	15	25	20	8
F100	3	18	30	30	13
	5	15	30	60	9,5
	7	15	30	40	14
F160	10	17	30	20	12
	12	10	50	20	14
F220	10	21	50	60	23
	12	17	50	20	20
F300	12	17	40	60	25
	15	15	50	30	25
F500	20	30	45	40	45
F900	15	36	62	75	65



# Cranes for Floating Barges

## BASIC FEATURES

- Lattice box type, rope luffing jib
- Spacious machinery room
- Double slewing unit
- Stepless speed control
- On-site training
- Marine duty equipment

We have successfully designed and introduced a wide range of tailor-made crane types. Based on our expertise and long experience, combined with a new innovative barge design, we are able to supply floating barge cranes according to your requirements.

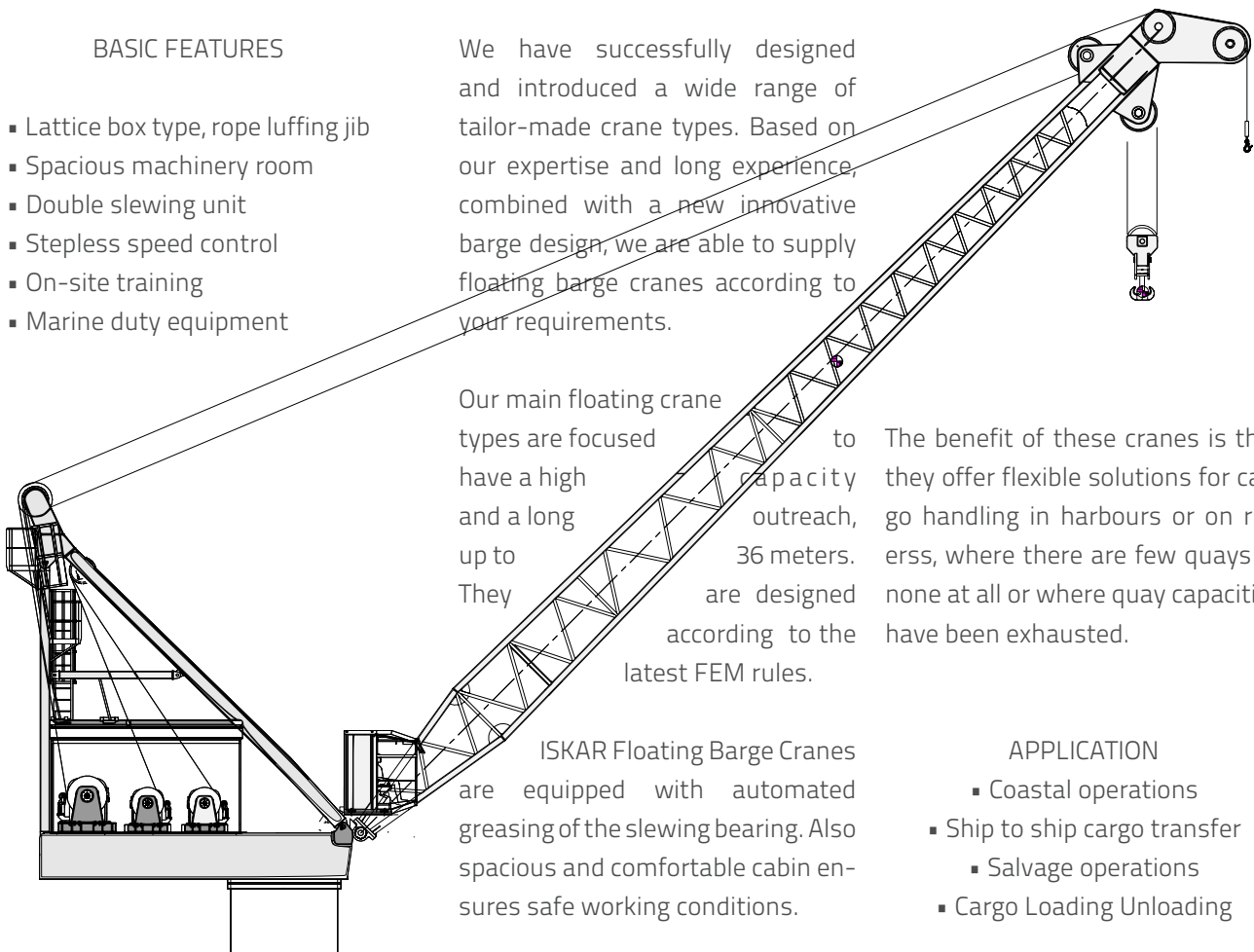
Our main floating crane types are focused to have a high capacity and a long outreach, up to 36 meters. They are designed according to the latest FEM rules.

ISKAR Floating Barge Cranes are equipped with automated greasing of the slewing bearing. Also spacious and comfortable cabin ensures safe working conditions.

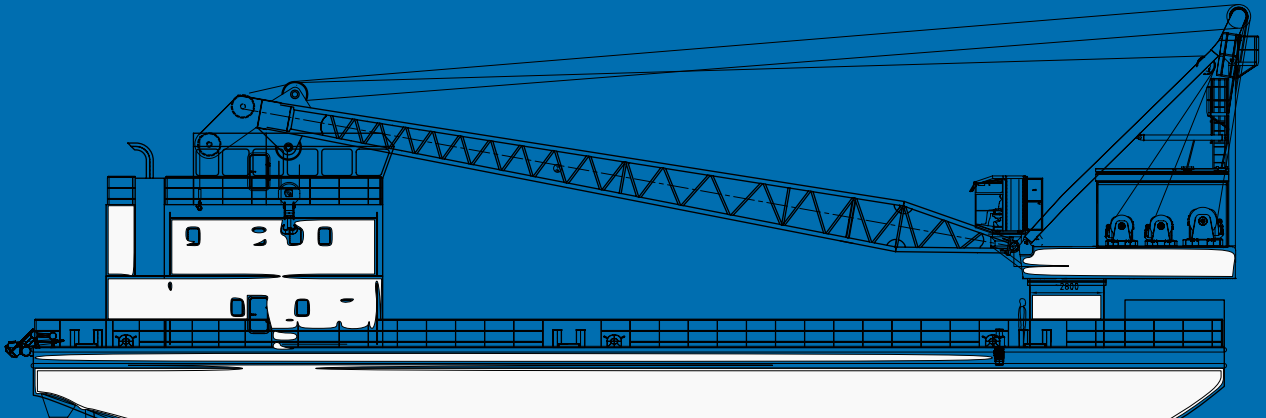
The benefit of these cranes is that they offer flexible solutions for cargo handling in harbours or on rivers, where there are few quays or none at all or where quay capacities have been exhausted.

## APPLICATION

- Coastal operations
- Ship to ship cargo transfer
- Salvage operations
- Cargo Loading Unloading



# "Floating Barge Cranes for coastal duty"



The dimensions and specifications of a floating barge crane is highly related to its duty and customers' requirements. ISKAR offers FBC Models cranes as main specs are given on the table right.

Capacities and dimensions different than the FBC models can be designed and manufactured on request.

## OPTIONAL FEATURES

- Constant tensioning system
- AOPS (Automatic overload protection system)
- Radio or Cabin operation
- Diesel driven power pack
- LEBUS grooved winch drum
- Operation in low temperature.
- Stainless steel fittings.

Crane Size	Max. SWL (t)	Outreach (m)	Hook Travel (m)	Hook Speed (m/s)	Weight appx. (t)
<b>FBC.4010</b>	40	22	15	12	38
<b>FBC.7008</b>	70	30	30	9	56
<b>FBC.2008</b>	200	25	18	4	92



# “Floating Cranes for coastal duty”

## FBC.7008 Features

**Drive Motor** 2 x, each 132 kW 380 VAC  
**Drive Unit** Softstarter  
In case of failure of one drive motor,  
the second motor can drive the crane.

**Emergency Lowering**  
Manual handpump enables opening of  
load holding valves and here therefore  
releasing the load down to floor.

**Recovery Lowering**  
Manual handpump enables opening of load  
holding valves and therefore lowering the load  
or slewing the crane in a safe position.

**Hoses & Fittings**  
Standard Zinc Plated with Grease

**Oil cooling system:**  
Fresh water cooling system.  
Max ambient temperature: +45°C

**Overload protection / automatic cut off:**  
All crane motions protected against overload by  
hydraulic relief valves.

**Load holding:**  
Load holding valves on all prime moving  
circuit to prevent the load from dropping in  
case of hose failure.

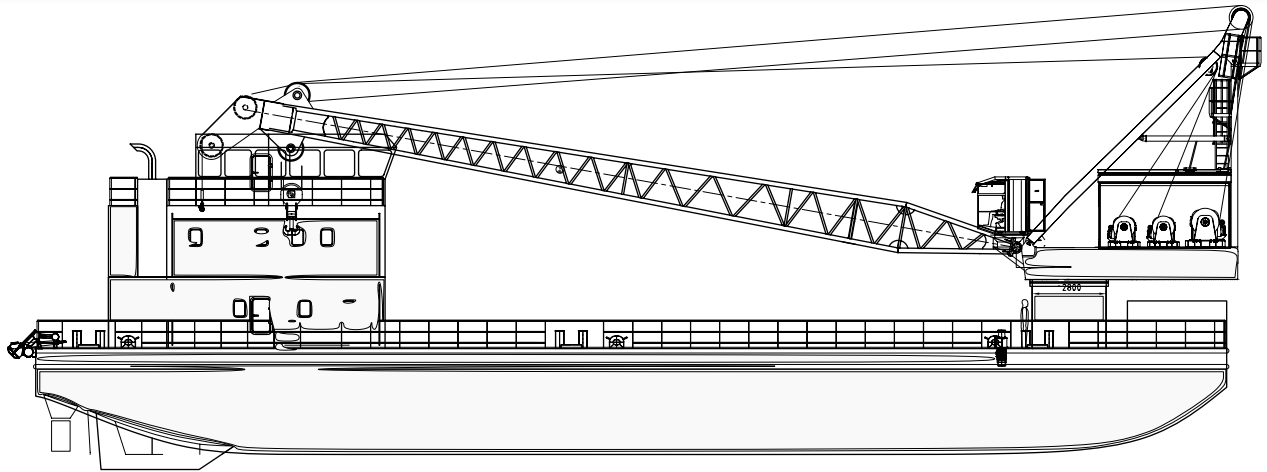
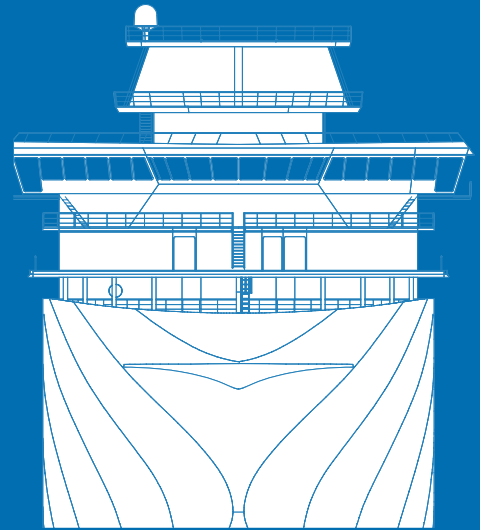
**Safety Devices**  
**Hook up/down switch**  
Limitation of hook stroke and prevents collu-  
sion to jib head

**Load Indicator**  
Load Monitoring for Main hook.  
Actual load on the hook is measured by a  
loadcell and displayed to the operator. In  
case of overloading and alarm is sounded.  
Only moment reducing movements are al-  
lowed

**Corrosive Environment Provisions**  
Three coat C5M marine paint system

**Sea State**  
Sea state selector switch for adapting the  
load chart for different seastates during  
operation.

“The success in business:  
Do what you do better...”



### Operator Cabin

AC Unit, internal lighting, windshield wiper, sunshade, ergonomic seat with consoles on both sides, joysticks, emergency pushbutton Reset Button, LCD display, Radius indicator, sea state selector switch (SS0 – SS1),

Alarm indicators for 90%-110%-overload, motor thermal status and motor running indicator

The control is equipped with levers for:

- Luffing up / down
- Hoisting up/ down
- Slewing left / right

Fresh water cooling system.

Max ambient temperature: +45°C

### Slew Bearing

RotheErde or equivalent manufacturer acc. to delivery time schedule.

### Technical Parameters

Maximum lifting capacity	70 t
Working radius	
Maximum outreach	30.0 m
Minimum outreach	7.0 m

Hoisting height of hook above deck level at:	
Max outreach (Jib angle 15°)	8.0 m
Min outreach (Jib angle 80°)	27.0 m
Lowering depth below deck.	4 m

Pedestal diameter, approx.	2.4 m
Pedestal height from deck level	1.2 m
Total crane weight	50 t
Operational Heel / Trim	3 / 5°

### Working Speeds (+/- 5%)

Hoisting	0 – 9.0 m/min
Slewing	0 – 0.7 rpm
Luffing	90 sec



# OUR VENDORS

**SIEMENS**





*Your Partner from Turkey*

# iskar

## Contact Information

ISKAR Mühendislik  
Makina Taahhüt San. ve Tic. Ltd. Şti.

Ahmet Cevdet Paşa Sok. YKB D Blok  
11/6 Kadıköy, İstanbul - 34744 Turkey

Phone +90 216 373 3224

Fax +90 216 372 4959

eMail [iskarltd@iskarltd.com](mailto:iskarltd@iskarltd.com)

Web [www.iskarltd.com](http://www.iskarltd.com)

